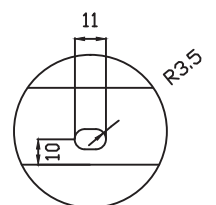
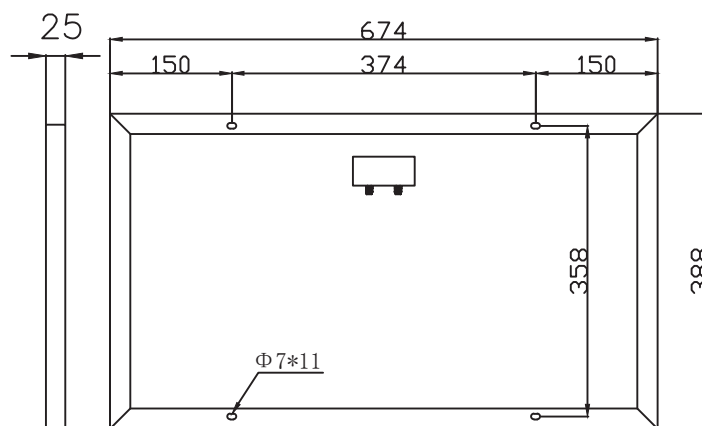
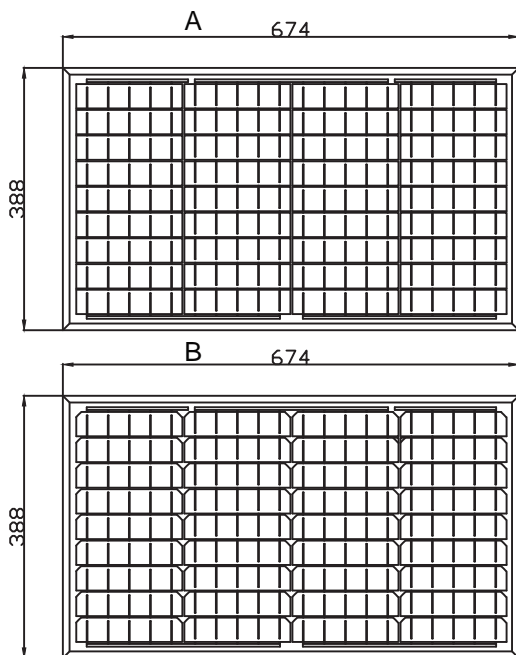


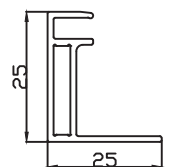
ESPSC030

Specifications

Size of module	388x674x25mm
Cell Type	MONO CELL 36x156.75mm
Number of cells	36(4x9)
Maximum Power(Wp)	30W
Tolerance of Power(%)	±3%
Open circuit Voltage(Voc)	22.7V
Short circuit Current(Isc)	1.74A
Maximum Power Voltage(Vm)	18.3V
Maximum Power Current(I _m)	1.64A
Maximum Series Fuse	10A
Number of Diode	1
Cable type and Length	without cable
Standard Test Conditions	1000W/M ² , 25 °C, AM1.5
Maximum System Voltage	600V/DC
Temperature-Coefficient I _{sc}	+0.08558%/°C
Temperature-Coefficient U _{oc}	-0.29506%/°C
Temperature-Coefficient P _{mp}	-0.38001%/°C
Normal Operating Cell Temperature	45 °C
Module efficiency	11.4%
Product Certificate	TUV(IEC 61215, IEC 61730), CE, ROHS
Company Certificate	ISO9001, ISO14001, ISO18001



安装孔细节



铝框截面

ERA SOLAR and the ERA SOLAR logo are trademarks or registered trademarks of ERA SOLAR Corporation.
 January 2019 ERA SOLAR Corporation. All rights reserved. Specifications included in this datasheet are subject to change without notice.

